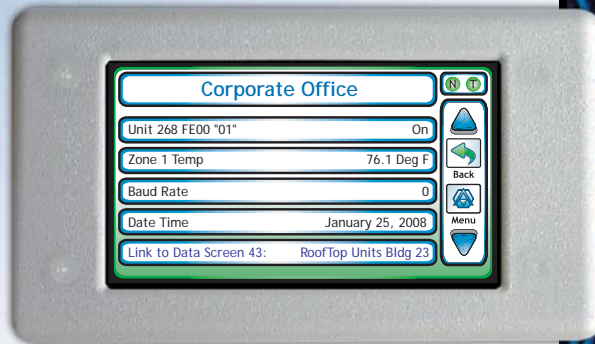


DESCRIPTION

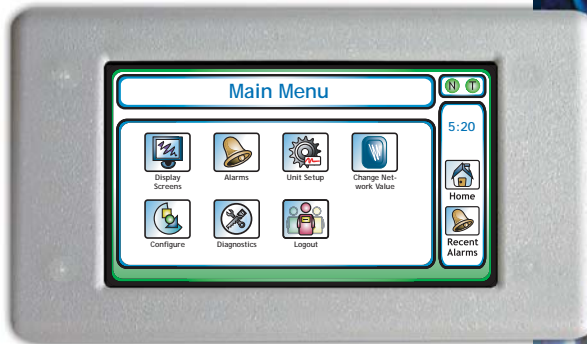
The BBC-SD is a BACnet MS/TP-based touch-screen interface providing local display information for BACnet-based Building Automation Systems. Through utilization of the intuitive graphical interface, building owners and tenants can navigate through the local display to learn more about working variables such as temperatures, set-points, schedule parameters, alarm data and much more. The BBC-SD can integrate with systems of any size as well as interact and display information from any BACnet device regardless of manufacturer or vendor. Never before has there been such an innovative design in an affordable package.

FEATURES

- Able to automatically display and modify up to 150 BACnet object properties
- Can manually address, view and modify any primitive data points on the BACnet network
- 50 configurable data screens containing live BACnet network data and/or hyper-links to other data screens allow unique point groupings
- 12-bit color, 480 x 272 pixel TFT-based Touch Screen Local User Interface for data display and modification
- Conforms to BACnet MS/TP LAN Standard
- Configurable header information
- Multi-tiered icon driven screen navigation
- Available "Home Screen", adaptable to display frequently viewed or accessed data
- Intuitive Screen Calibration
- Multi-level numeric password-based access protection
- Able to "sniff" network traffic, store and display up to 128 notification or summary alarms
- Flash program upgradeable through use of standard SD/MMC card port
- Standard text representation of specified events
- Programmable display dimming functions to protect against image burn
- Non-volatile memory stored on the BBC-SD for back-up and cloning over the network
- Network time synchronization capabilities (requires interaction with a live time master)



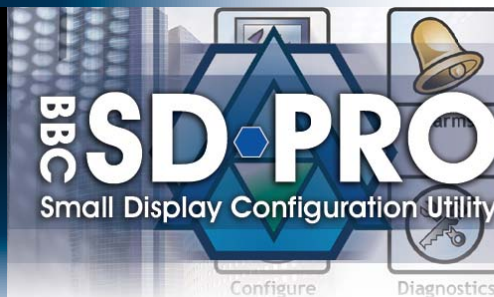
Home Screen



Main Menu Screen

SD-Pro™ Configuration Utility

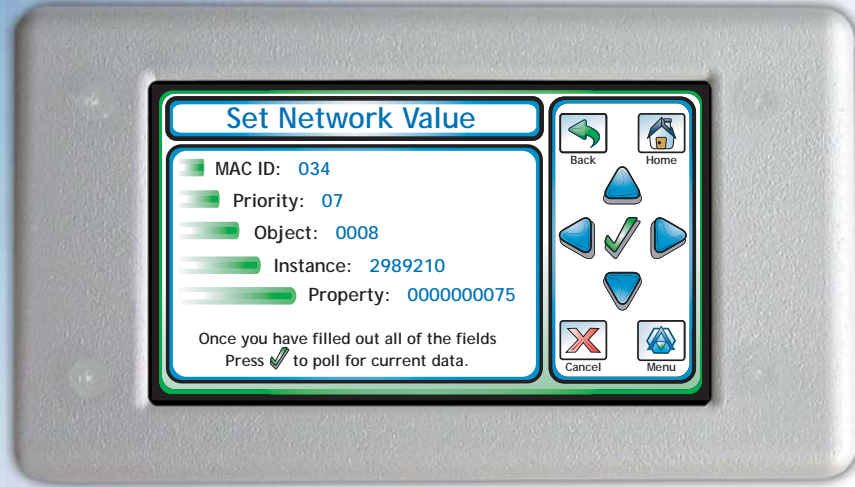
SD-Pro is a PC-based configuration environment used to setup and configure the operational parameters of the BBC-SD. Through the use of this software users can define key data from BACnet MS/TP units which will be displayed on the screen for monitoring and modification. Once all configuration parameters have been defined, a configuration file can be generated (saved) and transported to the BBC-SD through the use of its local SD-card socket or via BACnet File Services.



BBC-SD

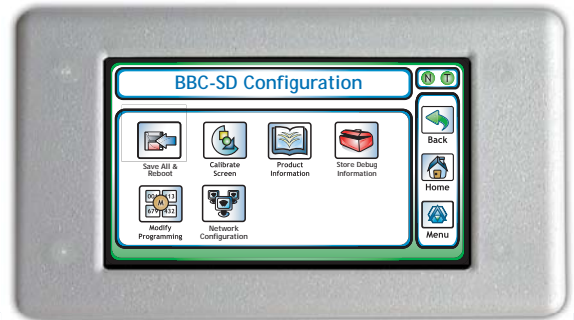
BACnet Building Controller Small Display

FEATURES CONTINUED...



Data-Entry Screen

- Token and network activity icons
- 50 customizable 24-character menu text headers
- Customizable long (150 characters) and short (24 characters) text description for each datapoint
- Chemical resistant "Kydex" plastic case, mountable on both US and Euro switch boxes
- Touch screen protected by a chemically resistant polyester membrane
- Advanced MS/TP diagnostics utilities
- Adjustable volume control
- Up to 16 linked BACnet schedules and calendars



Configuration Screen

SPECIFICATIONS

| Processor | Touch Screen Display | Local Memory Storage | |
|---|---|---|---|
| <ul style="list-style-type: none"> • High-speed 32-bit processor running at 86 MHz | <ul style="list-style-type: none"> • Backlit 16:9 widescreen TFT color LCD • 480 x 272 pixels | <ul style="list-style-type: none"> • 8MB Intel on board flash | |
| SRAM | Features | Communications | SD / MMC Card Socket |
| <ul style="list-style-type: none"> • 1 MB RAM | <ul style="list-style-type: none"> • Revert button • Reset button | <ul style="list-style-type: none"> • BACnet MS/TP Master • 9.6, 19.2, 38.4, 76.8 kbps, 576k, 115.2k | <ul style="list-style-type: none"> • Supports 2GB storage capacity |
| Dimensions | Operating Environment | Power Requirements | |
| <ul style="list-style-type: none"> • Overall size: 6.0 x 3.4 x 1.0 in. (15.24 x 8.64 x 2.54 cm) • Mounting holes for 2X4 utility or 2X2 K power box | <ul style="list-style-type: none"> • Operating temperature: 32 to 122°F (0 to 50°C) • Relative humidity: 0 to 80% noncondensing | <ul style="list-style-type: none"> • Input: 14-29 VAC/DC, 50/60 Hz; 4W Maximum; Class 2 | |

Available at [Building Controls Connection, Inc.](http://www.controlsconnection.com)

7637 Porter Road Niagara Falls, New York 14304 U.S.A. Tel 716-298-1693 Fax 716-298-1696

www.controlsconnection.com

