

SUB-PANELS

Construction -

Subpanels are constructed from carbon steel. Size determines steel thickness. Optional bracing available on large sub-panels.

Finish -

Powder coated white.

Options -

(/) Add SS6 to the end of a sub-panel part number for a 316 stainless steel sub-panel. (Example: SCE-30P30SS6)

⚡ Available within 10 working days if not in stock

SUB-PANELS

Catalog No.	Height (A)	Width (B)	Configuration	Edge Flanges	Product Code	List Price
SCE-6P4	4.88	2.88	A	Flat	P3	3.01
SCE-6P6	4.88	4.88	A	Flat	P3	3.61
SCE-8P6	6.75	4.88	A	Flat	P3	4.17
SCE-8P8	6.75	6.88	A	Flat	P3	4.89
SCE-10P8	8.75	6.88	A	Flat	P3	5.70
SCE-10P10	8.75	8.88	A	Flat	P3	6.73
SCE-12DLP12	9.00	9.00	B	Flat	P3	13.67
SCE-12P24	9.00	21.00	C	Four	P3	27.86
SCE-12P6	10.75	4.88	A	Flat	P3	5.35
SCE-12P10	10.75	8.88	A	Flat	P3	7.72
SCE-12P12	10.75	10.88	A	Flat	P3	9.08
SCE-14P8	12.75	6.88	A	Flat	P3	7.39
SCE-14P12	12.75	10.88	A	Flat	P3	10.13
SCE-16P12	13.00	9.00	B	Flat	P3	14.81
SCE-16DLP14	13.00	11.00	B	Flat	P3	17.72
SCE-16P16	13.00	13.00	B	Flat	P3	24.57
SCE-16P10	14.75	8.88	A	Flat	P3	9.90
SCE-16P14	14.75	12.88	A	Flat	P3	19.95
SCE-20P12	17.00	9.00	B	Flat	P3	23.14
SCE-20P16	17.00	13.00	B	Flat	P3	30.37
SCE-20P20	17.00	17.00	B	Flat	P3	35.44
SCE-24P16	21.00	13.00	C	Four	P3	32.92
SCE-24P20	21.00	17.00	C	Four	P3	45.57
SCE-24P24	21.00	21.00	C	Four	P3	53.18
SCE-30P16	27.00	13.00	C	Four	P3	45.57
SCE-30P20	27.00	17.00	C	Four	P3	55.70
SCE-30P24	27.00	21.00	C	Four	P3	63.29
SCE-30P30	27.00	27.00	C	Four	P3	83.55
SCE-36P16	33.00	13.00	C	Four	P3	53.18
SCE-36P24	33.00	21.00	C	Four	P3	75.96
SCE-36P30	33.00	27.00	C	Four	P3	101.27
SCE-36P36	33.00	33.00	C	Four	P3	118.99
SCE-40P24	37.00	21.00	C	Four	P3	86.08
SCE-42P24	39.00	21.00	C	Four	P3	91.14
SCE-42P30	39.00	27.00	C	Four	P3	116.47
SCE-42P36	39.00	33.00	C	Four	P3	136.72
SCE-42P42	39.00	39.00	C	Four	P3	156.97
SCE-48P48	44.00	44.00	C	Four	P3	212.67
SCE-48P24	45.00	21.00	C	Four	P3	98.74
SCE-48P30	45.00	27.00	C	Four	P3	129.13
SCE-48P36	45.00	33.00	C	Four	P3	154.46
SCE-48P42	45.00	39.00	C	Four	P3	177.24
SCE-60BFP42	56.00	38.00	C	Four	P3	230.41
SCE-60P48	56.00	44.00	C	Four	P3	268.38
SCE-60P60	56.00	56.00	C	Four	P3	331.68
SCE-60P24	57.00	21.00	C	Four	P3	129.13
SCE-60P30	57.00	27.00	C	Four	P3	159.52
SCE-60P36	57.00	33.00	C	Four	P3	189.89
SCE-64P25	60.00	21.75	C	Four	P3	159.52
SCE-64P31	60.00	27.75	C	Four	P3	167.11
SCE-64P37	60.00	33.75	C	Four	P3	182.30
SCE-64P52	60.00	48.00	C	Four	P3	334.21
SCE-64P64	60.00	60.00	C	Four	P3	362.06
SCE-64P76	60.00	72.00	C	Four	P3	425.36

SUB-PANELS (continued)

Catalog No.	Height (A)	Width (B)	Configuration	Edge Flanges	Product Code	List Price
SCE-72P60	68.00	56.00	C	Four	P3	394.98
SCE-72P72	68.00	68.00	C	Four	P3	470.93
SCE-72P30	69.00	27.00	C	Four	P3	210.15
SCE-72P36	69.00	33.00	C	Four	P3	225.33
SCE-76P37	72.00	33.75	C	Four	P3	250.65
SCE-76P76	72.00	72.00	C	Four	P3	498.78
SCE-82P37	78.00	33.75	C	Four	P3	278.51
SCE-82P76	78.00	72.00	C	Four	P3	501.32

SUB-PANELS

Construction -

Subpanels are constructed from carbon steel. Size determines steel thickness. Optional bracing available on large subpanels.

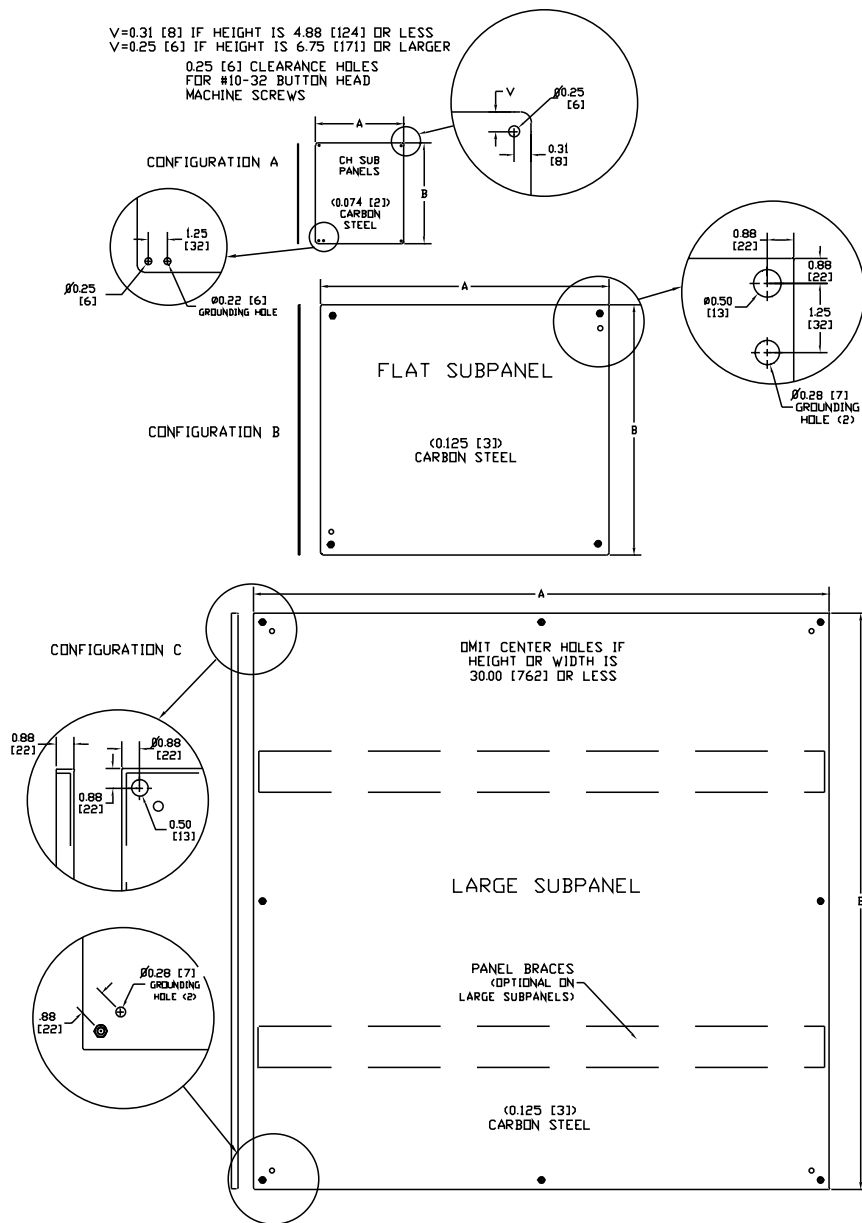
Finish -

Powder coated white.

Options -

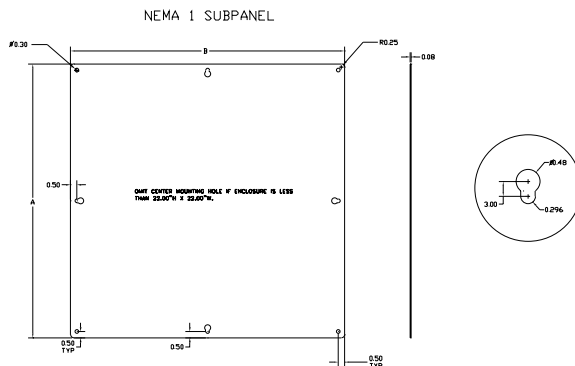
(/) Add SS6 to the end of a sub-panel part number for a 316 stainless steel sub-panel. (Example: SCE-30P30SS6)

⚡ Available within 10 working days if not in stock



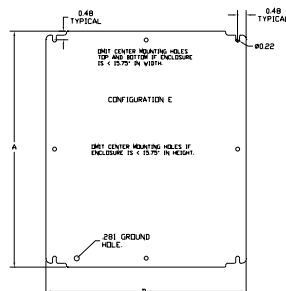
TYPE 1 SUB-PANELS

Catalog No.	Height (A)	Width (B)	Product Code	List Price
SCE-6N6MP	4.00	4.00	N1	2.32
SCE-8N6MP	6.00	4.00	N1	2.74
SCE-8N8MP	6.00	6.00	N1	3.21
SCE-10N8MP	8.00	6.00	N1	3.78
SCE-10N10MP	8.00	8.00	N1	4.40
SCE-12N10MP	10.00	8.00	N1	5.12
SCE-12N12MP	10.00	10.00	N1	6.11
SCE-14N12MP	12.00	10.00	N1	6.86
SCE-16N12MP	14.00	10.00	N1	7.71
SCE-16N16MP	14.00	14.00	N1	9.47
SCE-20N16MP	18.00	14.00	N1	11.65
SCE-20N20MP	18.00	18.00	N1	15.83
SCE-24N16MP	22.00	14.00	N1	14.33
SCE-24N20MP	22.00	18.00	N1	17.87
SCE-24N24MP	22.00	22.00	N1	33.63
SCE-30N24MP	28.00	22.00	N1	44.46
SCE-30N30MP	28.00	28.00	N1	55.55
SCE-36N24MP	34.00	22.00	N1	45.70
SCE-36N30MP	34.00	28.00	N1	65.58



Catalog No.	Height (A)	Width (B)	Product Code	List Price
SCE-6P4J	5.00	3.00	P3	3.02
SCE-6P6J	5.00	5.00	P3	3.62
SCE-8P6J	7.00	5.00	P3	4.17
SCE-10P8J	9.00	7.00	P3	5.70
SCE-12P10J	11.00	9.00	P3	7.72
SCE-12P12J	11.00	11.00	P3	9.08
SCE-14P12J	13.00	11.00	P3	10.13
SCE-16P14J	15.00	13.00	P3	19.96
SCE-20P16J	19.00	15.00	P3	30.40
SCE-20P20J	19.00	19.00	P3	35.44

Enclosure Size - 0.75 = Sub-Panel Size



SUB-PANELS

Type 1 Sub-Panels

Designed to be used with Nema 1 enclosures. Made of heavy gauge steel and powder coated white.

Enviroline® Junction Enclosure (ELJ) Sub-Panels

Designed to be used with Enviroline® Junction Enclosures. Made of heavy gauge steel and powder coated white.

SUB-PANELS

Perforated Sub-Panels

Perforated Subpanels have 0.13 mounting holes with 0.25 staggered patterns for the installation of lightweight control components with #8 self threading screws, for use in small and medium size Type 1 enclosures.

TYPE 1 PERFORATED SUB-PANELS ACCESSORIES

Catalog No.	Height (A)	Width (B)	Product Code	List Price
SCE-6N6MPP	4.00	4.00	N1	2.63
SCE-8N6MPP	6.00	4.00	N1	3.11
SCE-8N8MPP	6.00	6.00	N1	3.64
SCE-10N8MPP	8.00	6.00	N1	4.29
SCE-10N10MPP	8.00	8.00	N1	4.99
SCE-12N10MPP	10.00	8.00	N1	5.81
SCE-12N12MPP	10.00	10.00	N1	6.93
SCE-14N12MPP	12.00	10.00	N1	7.79
SCE-16N12MPP	14.00	10.00	N1	8.75
SCE-16N16MPP	14.00	14.00	N1	10.75
SCE-20N16MPP	18.00	14.00	N1	13.23
SCE-20N20MPP	18.00	18.00	N1	17.97
SCE-24N16MPP	22.00	14.00	N1	17.97
SCE-24N20MPP	22.00	18.00	N1	20.29
SCE-24N24MPP	22.00	22.00	N1	38.17
SCE-30N24MPP	28.00	22.00	N1	50.47
SCE-30N30MPP	28.00	28.00	N1	63.05
SCE-36N24MPP	34.00	22.00	N1	63.05
SCE-36N30MPP	34.00	28.00	N1	74.43

NEMA 1 PERFORATED SUBPANEL

