



134 Pressure Electric Switch.

Description

The 134 Pressure Electric Switches are heavy duty pressure-actuated, mechanical contact type switches used to open or close electrical circuits from pressure signals in pneumatic control systems.

Applications

The 134 Pressure Electric Switches are used wherever it is necessary to close (or open) an electrical circuit on the basis of a predetermined air pressure signal. This switch is to be used in areas protected from the weather. Typical applications include the control of air compressors, fans, pilot lights, resistance heating elements, control of electric heating loads or motors on fans, pumps or small air compressors.

features

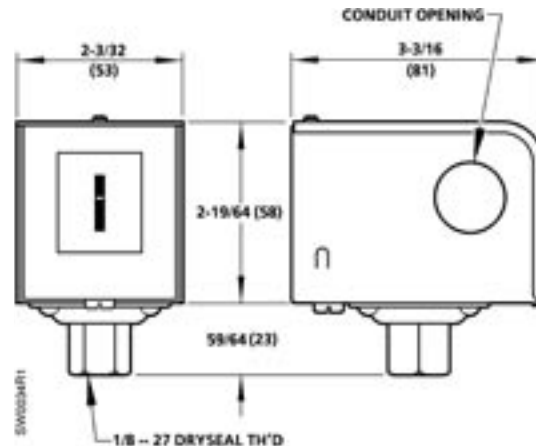
- DPST or SPDT snap-acting
- External adjustment and indication of set point and differential
- Screw terminals are easily accessible for field wiring
- Long life, heavy duty contact mechanism
- Normally open or normally closed contacts models available
- Not position sensitive, can be mounted in any position
- Mounting bracket included

Specifications/Product Ordering

Medium	Compressed air
Set Point Range	3 to 30 psig (20 to 200 kPa)
Differential	Adjustable from 1.5 to 20 psig (10 to 138 kPa)
Maximum Pressure	50 psig (345 kPa)
Pressure Connection	1/8" male NPT
Conduit Opening	1/2" (13 mm) nominal conduit
Ambient Temperature	32 to 140°F (0 to 60°C)
Pilot Duty	
134-1450, 134-1451	125 VA @ 600 Vac
134-1460	125 VA @ 24 to 277 Vac
Agency Approval (for 134-1450 only)	UL file E 35198
Shipping Weight	2.0 lb. (0.9 kg)

	Description	Switch Action	Electrical Rating	Part No.
134	Pressure Differential, Adjustable Switch, 1.5 to 10 psi	DPST (NO)	IND: 12 A @ 120, 208 & 240 Vac	134-1450
		DPST	Non-IND: 12 A @ 120 to 277 Vac	134-1451
	Fixed Differential Switch 2.0 psi	SPDT (NC)	IND: 16 A @ 120 Vac; 8 A @ 240 Vac Non-IND: (SPDT) 16 A @ 120 to 277 Vac (SPST) 24 A @ 120 to 277 Vac	134-1460

Dimensions



Dimensions shown in inches (mm).